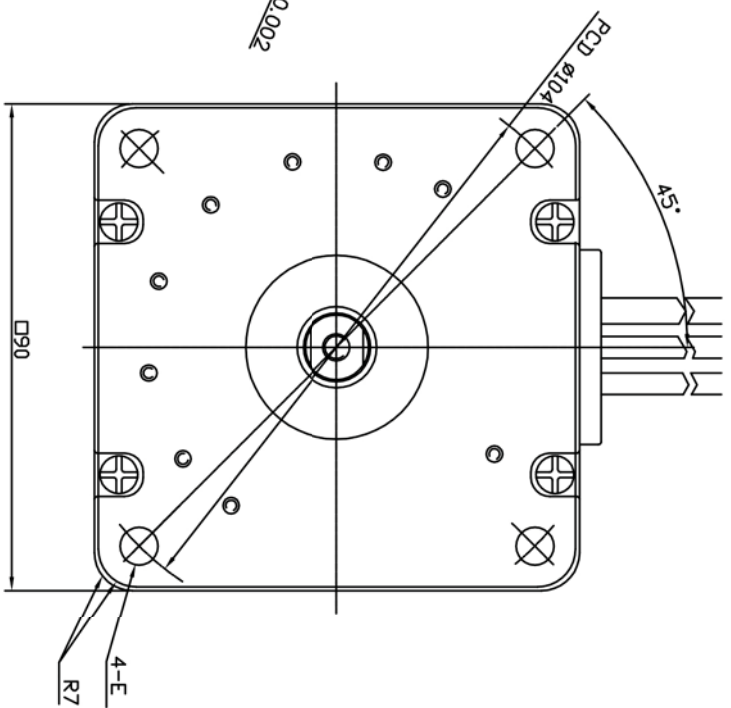
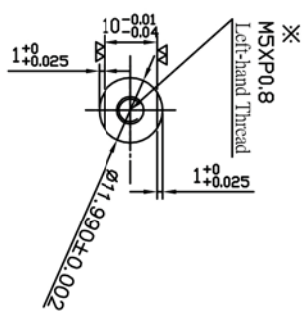
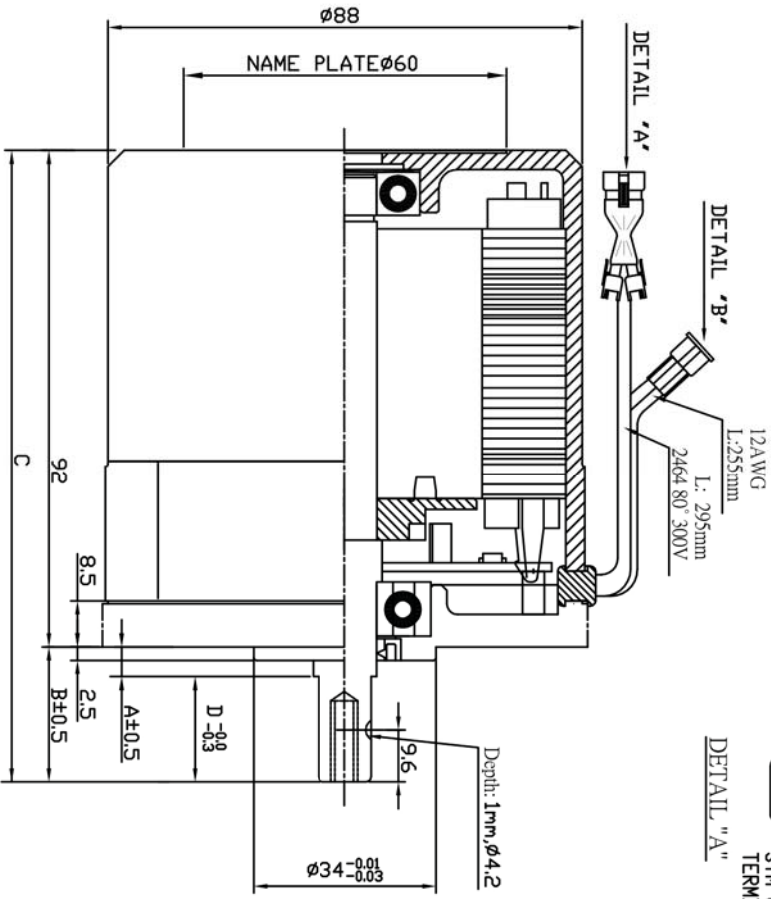
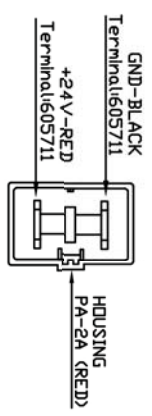
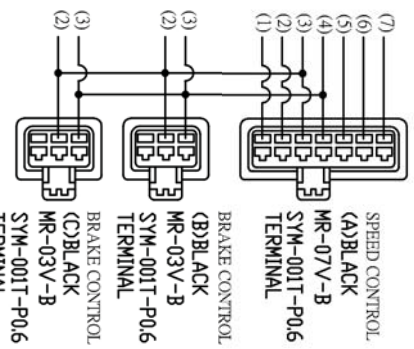


Motor output control wire	
Pin 1	Battery detective signal leadwire(24V)
Pin 2	+5V Output (Max 20mA)
Pin 3	Brake with cut off
Pin 4	GND
Pin 5	Speed command input 0~1.8V : Zero speed (0% PWM) 4V : Max speed (100% PWM)
Pin 6	FG
Pin 7	(N,C)
Pin 1	(N,C)
Pin 2	Brake with cut off
Pin 3	When pin2 & pin3 short, motor power cut off; when pin2 & pin3 open, motor is controlled by speed command input.



Item	V	Pole	Class	Color	Rated Power	Rated Speed	Rotation	Dimension					Model No
G01	24 VDC	8	E	Black	500 W	2500 rpm	CW	A	B	C	D	E	HEV172

APPROVE	CHECK	DESIGN	REVISION	SCALE	TITLE	DRAWING NO.	OUTLINE
/	/	/	/	NT.S	EV-AS014	1/1	